



NEWINGTON
LONDON

2 Bedrooms

Apartment

Located in London

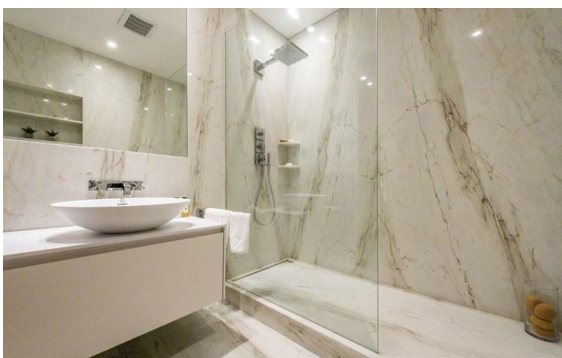
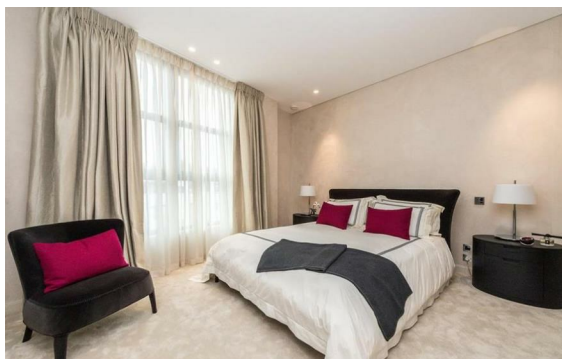
£1,240 Per Month



info@newingtonstates.com

<http://www.newingtonstates.com>

020 7724 2233



NEWINGTON LONDON

60 Upper Montagu Street

London

W1H 1SN

020 7724 2233

info@newingtonstates.com

A large two-bedroom family apartment situated on the top floor of this landmark building. Providing excellent entertaining space, the apartment additionally benefits from floor to ceiling windows in the living room, stone floors and ceramic tiles to kitchens and timber system floors to living and the dining room. It also benefits from CCTV monitored by the 24-hour concierge service and views over Lord's Cricket Ground.

The property benefits from an exclusive 24 hour concierge service, beautifully landscaped communal gardens and is excellently situated opposite Lord's Cricket Ground within close proximity to all the amenities of both Regent's Park and St. John's Wood High Street, including St. John's Wood Underground Station (Jubilee Line). EPC RATING: B

Energy Efficiency Rating: C

Agents Note: Whilst every care has been taken to prepare these particulars, they are for guidance purposes only. All measurements are approximate and are for general guidance purposes only and whilst every care has been taken to ensure their accuracy, they should not be relied upon and potential buyers/tenants are advised to recheck the measurements.

<http://www.newingtonstates.com>